



40th Walker Cup Match

August 12 - 14, 2005

Chicago Golf Club
Wheaton, Illinois



General Walker Cup Information

Host Site

Chicago Golf Club, Wheaton, Illinois

Course Architect

C. B. Macdonald, 1894

Par and Yardage

Chicago Golf Club is set up at 6,782 yards and the par is 35-35 – 70.

Dates

August 12-14, 2005

What is the Walker Cup Match?

The Walker Cup Match is contested by male amateur players, one team from the United States of America and one team from England, Ireland, Scotland and Wales (GB&I). The teams consist of not more than 10 players and a captain. The Match is conducted every two years, alternately in the U.S. and Great Britain/Ireland. The USA team is selected by the United States Golf Association and the GB&I team by the Royal and Ancient Golf Club of St. Andrews.

Web Sites

www.usga.org

www.walkercup.org

Defending Champion

GB&I – Reigning Welsh Amateur champion Stuart Manley won his singles match and fellow countryman Nigel Edwards halved the last match of the final day, giving Great Britain and Ireland a record third consecutive victory over the USA in the 2003 Walker Cup Match at Ganton Golf Club in North Yorkshire, England, 12% to 11%.

Series

The United States leads the series, 31-7-1

Future Sites

2007 – Royal County Down Newcastle, County Down, Ireland

2009 – Merion Golf Club, Ardmore, Pennsylvania, USA



Spectator Information

Admission Gates

The admission gates will be open from 6:30 a.m. to 7:30 p.m. Friday, August 12th through Sunday, August 14th.

Note: All start and finish times are subject to slight change.

ATM/Cash Machine

ATM/Cash Machines will be located adjacent to the Merchandise Pavilion.

Camera Policy

Cameras and camcorders are not allowed on-site at anytime.

Disabled Spectators

A disabled service facility will be located at the Main Admission Gate to provide disabled spectators with complimentary scooter carts.

First Aid Station

A first aid station will be located adjacent to the clubhouse.

Food and Beverage

Food and beverage will be available for purchase at concession stands throughout the golf course.

Foursomes

Foursomes are matches where two players compete against two other players in alternate shot format, with each side playing just one ball.

Junior Tickets

Juniors 17 and younger will be admitted free of charge, on any day, when accompanied by a adult/paid ticket holder. Junior tickets are available at Will Call.

Merchandise Pavilion

The on-site Merchandise Pavilion offers a variety of merchandise bearing the Walker Cup logo. Acceptable forms of payment in the Merchandise Pavilion are: U.S. dollars, travelers checks, American Express, MasterCard, and VISA. Personal checks and debit cards are not accepted. Cash is available at a nearby ATM.

Restroom Facilities

Portable restroom facilities including facilities for disabled spectators will be located throughout the course.

Schedule of Events

Friday, August 12, 2005 (All times are approximate.)

Official Practice Rounds are scheduled during the morning, 5:30 p.m. – Flag Raising Ceremony

Saturday, August 13, 2005

7:30 a.m. – 12:00 noon – Four foursome matches (18 holes each)

12:30 p.m. – 6:00 p.m. – Eight singles matches (18 holes each)

Sunday, August 14, 2005

7:30 a.m. – 12:00 noon – Four foursome matches (18 holes each)

12:30 p.m. – 6:00 p.m. – Eight singles matches (18 holes each)

Security

Security procedures for this year's match have been implemented. Listed below are items that are not allowed on-site at the Walker Cup Match:

- No Cell Phones
- No Noise Producing Electronic Devices
- No Cameras and/or Camcorders
- No Bags larger than 12"Wx12"Hx12"D in its natural state
- No Cases and/or covers (such as chair covers)
- No Signs, posters and/or banners
- No Televisions and/or radios
- No Food and/or Beverages
- No Containers and/or coolers
- No Pets other than service animals
- No Lawn and/or Folding Armchairs
- No Bicycles
- No Ladders
- No Metal-spiked golf shoes
- No Weapons (regardless of permit) including but not limited to: firearms or knives or any other items deemed unlawful by the USGA and/or Match Security Personnel, in their sole discretion.

Spectator Information

Information about the Walker Cup Match as well as general information about the surrounding area will be available at an information booth located at the Main Admission Gate. Daily draw sheets will also be available at the information booth.

Will Call

There will be one Will Call facility at the Main Admission Gate. At no time during the Match can spectators drive to the Will Call area, however, spectator parking shuttles will drop off in close proximity to the Will Call facility.

Will Call Hours of Operation

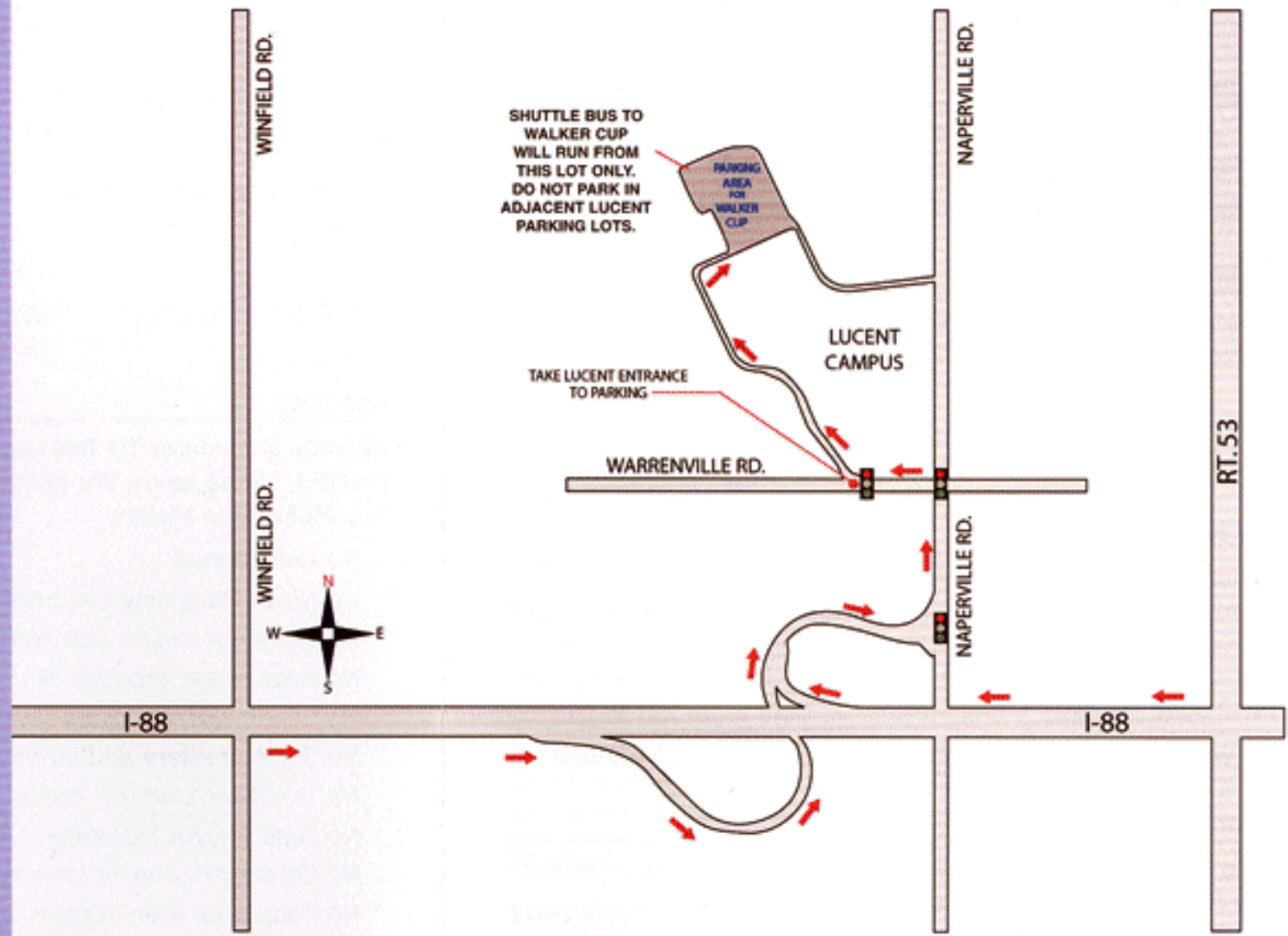
(Times subject to change)

Friday, August 12th – Saturday, August 13th

6:30 a.m. – 7:30 p.m.

Sunday, August 14th

6:30 a.m. – 4:00 p.m.



Driving Directions to General Spectator Parking

Complimentary shuttle buses will provide transportation to and from the golf course throughout the day.

Lucent Technologies is providing parking at their facility for the Walker Cup Match, however please **do not park** in their parking garages. Please note that any cars parking in the Lucent Technologies parking garages will be towed.

FROM DOWNTOWN CHICAGO

- Follow 290 West (Eisenhower Expressway).
- Take I-88 W toward Aurora.
- Take I-88 W to the Naperville Rd. exit.
- Turn left at the stop light onto Naperville Rd.
- Turn left onto Warrenville Rd. (1st stop light)
- Turn right onto W. Lucent Lane. (1st stop light)
- Follow signs to Walker Cup Spectator Parking.

FROM NORTH

- Follow I-294 South (Tri-state Tollway) to I-88 W toward Aurora.
- Take I-88 W toward Aurora.
- Take I-88 W to the Naperville Rd. exit.
- Turn left at the stop light onto Naperville Rd.
- Turn left onto Warrenville Rd. (1st stop light)
- Turn right onto W. Lucent Lane. (1st stop light)
- Follow signs to Walker Cup Spectator Parking.

FROM SOUTH

- Follow I-294 North (Tri-state Tollway) to I-88 W toward Aurora.
- Take I-88 W toward Aurora.
- Take I-88 W to the Naperville Rd. exit.
- Turn left at the stop light onto Naperville Rd.
- Turn left onto Warrenville Rd. (1st stop light)
- Turn right onto W. Lucent Lane. (1st stop light)
- Follow signs to Walker Cup Spectator Parking.

FROM SOUTHWEST

- Follow I-55 North toward Chicago to I-355 North.
- Take I-355 North to I-88 W toward Aurora.
- Take I-88 W to the Naperville Rd. exit.
- Turn left at the stop light onto Naperville Rd.
- Turn left onto Warrenville Rd. (1st stop light)
- Turn right onto W. Lucent Lane. (1st stop light)
- Follow signs to Walker Cup Spectator Parking.